

Michigan South Central Power Agency Presents:

The Spotlight



December 2014:

- * Employee Spotlight: Erica Burger
- * Service Awards & Birthdays
- * Member Cities & Villages Events
- * Employee Update
- * Ways to Help Those Less Fortunate



It's December. Thanksgiving has come and gone, Christmas is rapidly approaching, and the weatherman is using language that includes "wind chill" to let us know it is probably going to feel cooler than the thermometer says it is. Seems like everyone is trying to figure out what the winter will bring us this year. Will we see another "polar vortex"? Watching the natural gas markets, it appears to me as if the market players keep changing their minds with some fairly significant swings in both directions. One thing we do know is that this time of year brings with it an increase in our members' electric loads. The greenhouse in Coldwater, with the addition of their second phase of lighting, now consumes 30 MW of electricity and has provided Coldwater and MSCPA with new winter peak demand records. In any event, we are prepared for whatever comes along. Our coal stockpile is right on target, major equipment maintenance and repairs have been made and snow removal equipment is ready for action.

December also brought with it the deadline for the filing of comments to the US EPA's recently proposed rules to regulate CO2 and other greenhouse gas emissions from power plants such as ours. MSCPA, through our membership in both MMEA and APPA, has offered our suggestions that we hope will be considered. As I've said before, this will continue to be an interesting and probably lengthy process that will include many lawyers, political and business interests, economists and just about everyone in the power business; all trying to find a way to come out on top of this issue.

As we all get ready for Christmas, I hope each of us will make an effort to bring a smile to someone other than our own friends and families. Enjoy the season, help those that you can, be safe, and let's get ready for 2015! Merry Christmas

A handwritten signature in cursive script that reads "Glen White".

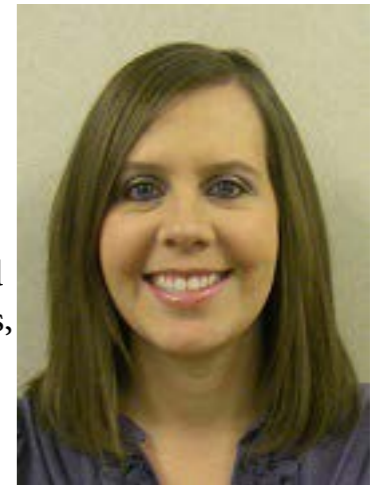
Glen White, General Manager

Employee Update

Congratulations to Joseph Snodgrass and Cody Sanger on their FTF Operator advancements!

Employee Spotlight: Erica Burger

Erica Burger was a temporary employee in late 2008 before she was hired as a Corporate Accountant in January 2009. Her job responsibilities include: payroll functions, filing of taxes, pension related reporting, monthly fuels inventory reporting, truck ticket reporting, prepare invoices, reconcile bank and general ledger accounts, perform wire transfers, record journal entries and assists the Director of Finance with monthly financial statements and data gathering for the annual audit. "I enjoy working with the people here and you cannot beat the benefits!"



Erica has been married to Brett for 5 years (together for 12 years). Erica and Brett have two children: Harrison, age 2 and Lily, age 5 months. Outside of work she enjoys spending time with her family, watching movies and trying to catch up on lost sleep.

Erica's Favorites: Snack: Red Twizzlers
TV Show: Walking Dead
Movie: Pretty Woman
Musician: Kelly Clarkson

Member Cities and Villages Events

December 1: 50th Annual Marshall Christmas Parade 6:45 PM <http://www.marshallmi.org/events/140>

December 5: Retail Open House in Downtown Marshall 6-9 PM

December 6: Christmas Scavenger Hunt Downtown Hillsdale <http://www.cityofhillsdale.org/christmas-savenger-hunt.aspx>

December 6: Litchfield Holiday Season Celebration <http://www.cityoflitchfield.org/Events/Calendar.aspx>

December 6: Light Up Hillsdale Parade through Downtown Hillsdale 6:15 PM

December 6: Coldwater Hometown Holidays, Parade and Santaland

December 6, 7, 13, 14: Holiday Express aboard Little River Railroad <http://www.littleriverrailroad.com/special.htm>

December 7: Christmas Tea at Marshall's Governors Mansion 1-5 PM (Free)

December 11: Girls Night Out in Downtown Marshall 5-8 PM

December 11-13: The Best Christmas Pageant Ever at Coldwater's Tibbets Opera House

December 11-14: The Best Christmas Pageant Ever at Marshall's Franke Center for Performing Arts

December 21: Christmas Bingo at Coldwater's Tibbits Opera House

Ways to help those less fortunate

There are many children, women and men that could use a little help, especially during this time of year. Here are some ideas:

*If you have elderly family members or neighbors, volunteer to plow/shovel their drive and walkways or bring them a warm meal.

*The Salvation Army needs bell ringers, food and clothing donations <http://www.usc.salvationarmy.org/hillsdale>.

*Angel Trees: Stores, Dr.'s offices and schools have angel trees to provide not only gifts, but every day necessities that children and the elderly need.

Donate food to or volunteer at a food pantry:

Marshall - <http://www.foodpantries.org/ci/mi-marshall>

Coldwater - <http://www.foodpantries.org/ci/mi-coldwater>

Hillsdale - <http://www.foodpantries.org/ci/mi-hillsdale>

Clinton - <http://www.foodpantries.org/ci/mi-clinton>

Litchfield - <http://www.umclitchfield.org/Community%20Help>

Food Bank of South Central Michigan <http://www.foodbankofscm.org/GetInvolved.aspx>

December birthdays

Marty Beebe
Steve Flowers
Roger Winchell

Service awards

Chris McArthur 15 years
Milo Cekander 10 years

The Spotlight is a monthly newsletter for the Michigan South Central Power Agency. Articles may be printed in whole or part without permission. If you wish to share any news or comments please contact Chrissy Van Kampen at vankampenc@mscpa.net

720 Herring Road Litchfield MI 49252
Phone: (517) 542-2346 Fax: (517) 542-3049